

Manufacturer:
AFL

Product Name:
AFL TS-04B Tripod Screw for CT60 Fiber Cleaver

Manufacturer Part Number:
S018691

▶ [Click here for more details on the AFL TS-04B Tripod Screw for CT60 Fiber Cleaver](#)

Fujikura 100R Fusion Splicer

The Fujikura 100R mass fusion splicer introduces Intelligent Alignment Control to deliver more reliable, uniform splices by automatically correcting fiber placement, end-face gaps, and axis alignment across all fibers.

Intelligent Alignment Control in the 100R enhances splice reliability by automatically correcting improper fiber seating, minimizing end-face gap variation, and stabilizing fiber-axis alignment across all fibers. Adjustable control levels allow the system to balance precision and cycle time, ensuring the best splice results across broadband or hyperscale applications.

Auto Placement Correction automatically detects and corrects fibers that are improperly seated in the V-groove prior to fusion. By automatically lifting the clamp and adjusting the Z-stage as needed, the system ensures proper fiber placement, reducing splice variability, and minimizing manual intervention.

Gap Alignment Correction automatically reduces variation in endface gaps across fibers prior to fusion. By continuously adjusting alignment until the target range is met, the 100R improves splice uniformity and consistency while completing the correction in as little as one second.

Axis Offset Correction reduces fiber axis position offsets across all fibers prior to fusion. By performing controlled, automatic alignment adjustments, the 100R improves splice uniformity and consistency while applying corrections only as needed to maintain efficient cycle times.

With the Fujikura 100R, you can keep your splicer in the field longer thanks to the included, field-replaceable V-grooves. With the AFL Tote Solution installed, the 100R transit case securely integrates with Milwaukee's PACKOUT™ system, offering faster transport, stability, and time savings for contractors and technicians.

Put our 100R to the test by contacting us to see its capabilities first-hand, 1-800-235-3423.

Features

- Intelligent Alignment Controls for hands-free alignment
- Auto Placement Correction for proper fiber seating
- Gap Alignment Correction for uniform endface gaps
- Axis Offset Correction for consistent fiber alignment
- Cleaver tracking and upkeep with wireless communication
- Automated wind protector, tube heater and splice operation
- User replaceable V-grooves
- Graphical User Interface with 5.0" Touchscreen
- Multi-function transit case with integrated workstation

Applications

- Data Center cable installation
- High fiber count metro and campus networks
- Long-haul network installs and repairs
- Trunk cable repair with Splice-on MPOs
- Ribbon splicing high-density cables with 200 µm loose fiber



[>> Return to Page 1](#)

Contact the professionals at Fiber Optic Center for a quote or to get more details.

focenter.com • 508-992-6464 | (800) 473-4237 • sales@focenter.com

23 Centre Street • New Bedford, MA 02740 USA

Product specifications and data are subject to change without notice. FOC last update 6/4/2026.



Manufacturer:
AFL

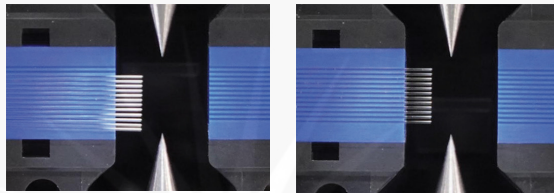
Product Name:
AFL TS-04B Tripod Screw for CT60 Fiber Cleaver

Manufacturer Part Number:
S018691

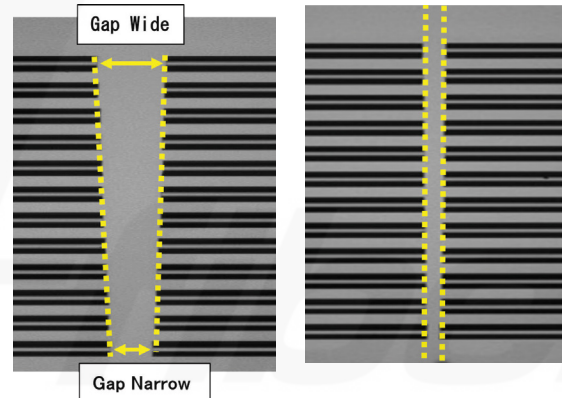
▶ [Click here for more details on the AFL TS-04B Tripod Screw for CT60 Fiber Cleaver](#)

Fujikura 100R Fusion Splicer

Intelligent Alignment Control Features



Auto Placement Correction
(before on left; after on right)



Gap Alignment Correction
(before on left; after on right)

Ordering Information

Description	AFL No.
Fujikura 100R SpliceReady Splicer Kit Includes: Fujikura 100R Standard Kit (S018665), FP-05 40 mm protection sleeve, Splicer V-groove cleaning kit, FH-80-12PC 200 to 250um Pitch Conversion Fiber Holder, AFL WFW wipes mini tub (90 wipes), FCC2 fiber cleaning fluid (3 oz.), RT-02 Ribbonizing tool	S018713
Fujikura 100R with 200 µm Accessories SpliceReady Kit Includes: Fujikura 100R Standard Kit (S018665), FP-05 40 mm protection sleeve, VG12-02-200 200 µm V-groove, FH-80-16PC 200 to 250 µm Pitch Conversion Fiber Holder, FH-80-12-200 fiber holders, RT-02 Ribbonizing tool, Splicer V-groove cleaning kit, FCC2 fiber cleaning fluid (3 oz.), AFL WFW wipes mini tub (90 wipes)	S018714
Fujikura 100R Fusion Splicer Kit with CT60 and RS03 Includes: BTR-19 Battery, ADC-22 AC Adapter, ACC-19 AC Cord, CT60 Cleaver, RS03 Stripper with internal BTR-12A battery, ADC-09A AC Adapter with ACC-09 cord, ELCT2-16C Spare Electrodes (pair) with spare V-Grooves (VG12-02), FH-80-12 Fiber Holders (pair), USB-02 Cable, Alcohol Dispenser, Quick Reference Guide, TS-04A Splicer Tripod Screw, TS-04B Cleaver Tripod Screw, On-board Instructional Manual, CC-48 Transit Case, ST-02 Fusion Splicer Strap and Two-year Warranty	S018665
Fujikura 100R Fusion Splicer (machine only) Includes: BTR-19 Battery, ADC-22 AC Adapter, ACC-19 AC Cord, ELCT2-16C Spare Electrodes (pair) with spare V-Grooves (VG12-02), FH-80-12 Fiber Holders (pair), USB-02 Cable, Alcohol Dispenser, Quick Reference Guide, TS-04A Splicer Tripod Screw, TS-04B Cleaver Tripod Screw, On-board Instructional Manual, Work Tray, CC-48 Transit Case, and Two-year Warranty	S018710
Fujikura 100R Fusion Splicer Kit without Bluetooth with CT60 and RS01 Includes: BTR-19 Battery, ADC-22 AC Adapter, ACC-19 AC Cord, CT-60 Cleaver, RS01 Stripper, ADC-09A AC Adapter with ACC-09 cord, ELCT2-16C Spare Electrodes (pair) with spare V-Grooves (VG12-02), FH-80-12 Fiber Holders (pair), USB-02 Cable, Alcohol Dispenser, Quick Reference Guide, TS-04A Splicer Tripod Screw, TS-04B Cleaver Tripod Screw, On-board Instructional Manual, CC-48 Transit Case, ST-02 Fusion Splicer Strap and Two-year Warranty	S018712
Fujikura 100R Fusion Splicer without Bluetooth Includes: BTR-19 Battery, ADC-22 AC Adapter, ACC-19 AC Cord, ELCT2-16C Spare Electrodes (pair) with spare V-Grooves (VG12-02), FH-80-12 Fiber Holders (pair), USB-02 Cable, Alcohol Dispenser, Quick Reference Guide, TS-04A Splicer Tripod Screw, TS-04B Cleaver Tripod Screw, On-board Instructional Manual, CC-48 Transit Case, and Two-year Warranty	S018711
One-Year Extended Warranty	S012996
Two-Year Extended Warranty	S013000

>> [Return to Page 1](#)

Contact the professionals at Fiber Optic Center for a quote or to get more details.

focenter.com • 508-992-6464 | (800) 473-4237 • sales@focenter.com

23 Centre Street • New Bedford, MA 02740 USA

Product specifications and data are subject to change without notice. FOC last update 6/4/2026.



Manufacturer:
AFL

Product Name:
AFL TS-04B Tripod Screw for CT60 Fiber Cleaver

Manufacturer Part Number:
S018691

▶ [Click here for more details on the AFL TS-04B Tripod Screw for CT60 Fiber Cleaver](#)

Fujikura 100R Fusion Splicer

Recommended Products for the 100R

Description	AFL No.	Description	AFL No.
Cleavers and Strippers		Batteries and Power Cords	
CT-60 Cleaver	S018654	ADC-22 AC Adapter	S018666
RS01 Thermal Stripper	S016815	BTR-19 Battery	S018670
RS02 Thermal Stripper	S016816	DCC-11 splicer to ribbon stripper power cord	S013852
RS03 Thermal Stripper	S016817	DCC-20 Power Cord	S017527
Fiber Holders and V-Grooves		Connects ADC-20 to cigarette lighter socket	
FH-80-2 Fiber Holder	S018726	DCC-21 Power Cord	S017528
FH-80-4 Fiber Holder	S018727	Connects ADC-20 to power source via alligator clips	
FH-80-5 Fiber Holder	S018728	ACC-14 AC Power Cord	S014536
FH-80-6 Fiber Holder	S018729	Miscellaneous	
FH-80-8 Fiber Holder	S018730	SS01 Single fiber stripper (1 hole)	S017099
FH-80-9 Fiber Holder	S018731	ELCT2-16C Electrodes	S018669
FH-80-10 Fiber Holder	S018732	Portable Splicing Worktray (see product profile for more detail)	S014773
FH-80-12 Fiber Holder	S018733	ASW-02 Splicing Workstation (see product profile for more detail)	S010532
FH-80-12-200 Fiber Holder	S018734	WT-11R Work Tray Right	S018674
FH-80-12PC 200 to 250um Pitch Conversion Fiber Holder	S018735	WT-11L Work Tray Left	S018673
FH-80-16 Fiber Holder	S018736	JP-12 Work Tray J-Plate (Splicer Mount)	S018681
FH-80-16-200 Fiber Holder	S018737	JP-11 J-Plate (Cooling tray attaches to splicer)	S018675
FH-80-16PC 200 to 250um Pitch Conversion Fiber Holder	S018738	TS-04B Cleaver Tripod Screw	S018691
FH-70-250 (250 µm coated fiber)	S017111	TS-04A Splicer Tripod Screw (90 Series)	S018677
FH-70-900 (900 µm jacketed fiber)	S017113	ST-02 Fusion Splicer Strap	S017525
FH-70-160 (160 µm coated fiber)	S017095	CLAMP-DC-12 (Drop Cable clamp on work tray)	S017550
FH-60-LT900 (Loose buffer 900 µm fiber)	S015181	FST-12 Fiber Separation Tool	S014012
VG16-02 16 Fiber/250 µm V-Groove	S018739	FAT-04 Fiber Arrangement Tool	S010212
VG16-02-200 16 Fiber/200 µm V-Groove	S018740	RT-02 Fiber Arrangement Tool	S017465
VG12-02 12 Fiber/250 µm V-Groove	S018741	FAA-03A Ribbon Forming Adhesive (4 oz. bottle)	S008720
VG12-02-200 12 Fiber/200 µm V-Groove	S018742	FAA-03A Ribbon Forming Adhesive (0.5 liter bottle)	S008622
VG08-02 8 Fiber/250 µm V-Groove	S018743	CC-48 Transit Case	S018672
VG04-02 4 Fiber/250 µm V-Groove	S018744	Splicer V-groove Cleaning Kit	S014397
FUSEConnect® Accessories		ST-03 Case and Work Tray Strap	S017549
FH-FC-20 (900 µm within 2.0 mm sheathing) (each)	S014696	AFL Tote Solution - Cleat Installation Service	S018623
FH-FC-30 (900 µm within 3.0 mm sheathing) (pair)	S014695		
FH-FC-900 (900 µm cable) (each)	S014697		
CLAMP-FC-2000 (pair)	S014705		

[>> Return to Page 1](#)

Contact the professionals at Fiber Optic Center for a quote or to get more details.

focenter.com • 508-992-6464 | (800) 473-4237 • sales@focenter.com

23 Centre Street • New Bedford, MA 02740 USA

Product specifications and data are subject to change without notice. FOC last update 6/4/2026.



Manufacturer:
AFL

Product Name:
AFL TS-04B Tripod Screw for CT60 Fiber Cleaver

Manufacturer Part Number:
S018691

▶ [Click here for more details on the AFL TS-04B Tripod Screw for CT60 Fiber Cleaver](#)

Fujikura 100R Fusion Splicer

Specifications

Parameter	Value	
Fiber Alignment Method	Self-Cladding alignment with Surface Melting Tension	
Fiber Count Can Be Spliced	Single and up to 16 Fiber Ribbon with Applicable V-groove	
Applicable Fiber	Fiber Type	Single-mode Fiber
	Cladding Diameter	Multimode Fiber
Applicable Coating	Fiber Holder	Approx. 125 µm
	Fiber Holder	Coating Shape: Refer to Options Cleave Length: Approx. 10 mm
Fiber Splice Performance	Splice Loss	ITU-T G.652: Avg 0.05 db
		ITU-T G.651: Avg 0.02 db
		ITU-T G.653: Avg 0.08 db
		ITU-T G.655: Avg 0.08 db
Splice Time	ITU-T G.657: Avg 0.08 db	
	SM Fast Mode: Avg 16 to 18 Seconds SM Auto Mode: Avg 19 to 21 Seconds	
Applicable Protection Sleeve	Sleeve Type	Heat Shrinkable Sleeve
	Sleeve Length	Max. 66 mm
	Sleeve Diameter	Max. 6.0 mm before Shrink
Sleeve Heat Performance	Heat Time	40 mm FP-05 Mode: Avg 33 to 40 Seconds
		40 mm FP-04T Fast Mode: Avg 19 to 26 seconds Single 60 mm Mode: Avg. 8 to 15 Seconds
Fiber Tensile Test Force	Approx. 2.0 N	
Electrode Life	Approx. 1,500 Splices	
Physical Description	Dimensions W	157 mm
	Dimensions D	178 mm
	Dimensions H	171 mm
	Weight	2.6 kg including Battery
Environmental Condition	Temperature	Operate: -10 to +50°C Storage: -40 to +80°C
	Humidity	Operate: 0 to 95% RH non-condensing Storage: 0 to 95% RH non-condensing
	Altitude	Max. 3,700 m
AC Adapter	Input	AC100 to 240V, 50/60Hz, Max. 1.5A
	Output	Approx. DC 12V, max. 7A
Battery Pack	Type	Rechargeable Lithium Ion
	Output	Approximately DC 12 V, Max 5A
	Capacity	Approximately 165 Splices with Heat Shrink
	Temperature	Operate: -10 to +50°C
		Recharge: 0 to +40°C
		Storage < One (1) Year: -20 to +20°C
Storage < Three (3) Months: -20 to +40°C Storage < One (1) Month: -20 to +50°C		
Recharge Time	≤ Six (6) Hours from Empty	
Battery Life	Approximately 500 Recharge Cycles	
Display	LCD Monitor	TFT 4.95 inch Tough Screen
	Magnification	Approx. 30x: 12-Fiber Ribbon Approx. 90x: Single Fiber
Illumination	V-Grooves	LED Lamp
	Splice Mode	100 splice modes
Data Storage	Heat Mode	30 heat modes
	Splice Result	20,000 splices
	Splice Image	100 images

[>> Return to Page 1](#)

Contact the professionals at Fiber Optic Center for a quote or to get more details.

focenter.com • 508-992-6464 | (800) 473-4237 • sales@focenter.com

23 Centre Street • New Bedford, MA 02740 USA

Product specifications and data are subject to change without notice. FOC last update 6/4/2026.



Manufacturer:
AFL
Product Name:
AFL TS-04B Tripod Screw for CT60 Fiber Cleaver
Manufacturer Part Number:
S018691

▶ [Click here for more details on the AFL TS-04B Tripod Screw for CT60 Fiber Cleaver](#)

Fujikura 100R Fusion Splicer

Specifications (cont.)

Parameter	Value
Automatic Functions	Splice-mode Select by Fiber Count Analysis
	Fusion Power Calibration
	Fully Automatic Cleaver Blade Management
	Wind Protector: Open and Close
	Clamp: Auto Clamping Force Adjustment
	Z-Holder Base: Auto Placement Correction
	Z-Holder Base: Gap Alignment Correction
	Splice Start
	Heater Lid: Open and Close
	Heater Clamp: Open and Close
Other Features	Heater Start
	Reference Guide
	Video and PDF Store on Splicer
	Electrode
	Replaceable without Tool
	Software for PC
	Splicer Update via Internet
	Parameter Upload and Download
	Operating Splicer with PC
	Splice Image Download to PC
GPS	Splice Location Recorded to Memory
	GEO Fencing
Screw Hole for Tripod	1/4-20 UNC

[>> Return to Page 1](#)

Contact the professionals at Fiber Optic Center for a quote or to get more details.

focenter.com • 508-992-6464 | (800) 473-4237 • sales@focenter.com

23 Centre Street • New Bedford, MA 02740 USA

Product specifications and data are subject to change without notice. FOC last update 6/4/2026.



Manufacturer:
AFL

Product Name:
AFL TS-04B Tripod Screw for CT60 Fiber Cleaver

Manufacturer Part Number:
S018691

▶ [Click here for more details on the AFL TS-04B Tripod Screw for CT60 Fiber Cleaver](#)

CT60 Fiber Cleaver

The Fujikura CT60 Fiber Cleaver is engineered for precision and durability, offering motorized blade rotation and Bluetooth connectivity for seamless integration with compatible Fujikura splicers. Designed to support both single and ribbon fibers, it delivers consistent cleave quality with minimal maintenance and an impressive blade life.

One-handed Operation: Designed for ergonomic use, the CT60 supports one-handed operation with a simplified cleaving mechanism and a toggle button for flexible arm control.

Motorized Blade Rotation: The CT60 features fully automatic blade rotation, ensuring consistent cleave quality and extending blade life up to 60,000 cleaves.

Bluetooth Connectivity: Seamlessly integrates with compatible Fujikura fusion splicers via Bluetooth, enabling smart blade management and maintenance tracking directly through the splicer.

Dual Cleaving: Capable of cleaving two optical fibers simultaneously, the CT60 significantly improves efficiency for technicians working with ribbon or paired fibers.

Expanded Blade Positions: With 28 cleaving positions, the CT60 eliminates the need for blade height adjustments, allowing finer control and easier maintenance.

Easy Maintenance: The CT60 fiber cleaver has a user-replaceable blade, so there's no need to send the device to a service center for blade or clamp replacement.

Drop-Tested Durability: Engineered to withstand drops up to 30 inches, the CT60 sets a new standard for ruggedness in fiber cleavers, making it ideal for field use.

Active Blade Management Technology: Automatically advances blade positions based on cleave count or quality, ensuring optimal performance without manual intervention.

Versatile Fiber Compatibility: Supports single-mode and multimode fibers, including single and ribbon configurations up to 16 fibers, with a wide range of coating diameters and fiber holders.

Compact and Lightweight Design: With a palm-sized design and a weight of just 280 g (including battery), the CT60 is portable and easy to handle in any environment.

User-Replaceable Blade and Components: Simplified maintenance allows users to replace blades and clamps in the field, reducing downtime and service costs.

Features

- Motorized blade rotation
- Bluetooth communication
- Shock resistant
- Simple one-step operation
- 60,000 cleave blade life
- Field serviceable



Bluetooth®



[>> Return to Page 1](#)

Contact the professionals at Fiber Optic Center for a quote or to get more details.

focenter.com • 508-992-6464 | (800) 473-4237 • sales@focenter.com

23 Centre Street • New Bedford, MA 02740 USA

Product specifications and data are subject to change without notice. FOC last update 6/4/2026.



Manufacturer:
AFL

Product Name:
AFL TS-04B Tripod Screw for CT60 Fiber Cleaver

Manufacturer Part Number:
S018691

▶ [Click here for more details on the AFL TS-04B Tripod Screw for CT60 Fiber Cleaver](#)

CT60 Fiber Cleaver

Specifications

Parameter		Value
Applicable Fiber	Fiber type	Single-mode optical fiber
	Fiber count	Multimode optical fiber
	Cladding diameter	Single, up to 16 fibers
Applicable Coating	Fiber plate	Approx. 125 µm
	Fiber holders	AD-60A: Max. 900 µm coating diameter maximum AD-60B: Max. 3 mm coating diameter maximum
Cleave Length	Fiber plate	FH-50, FH-60, FH-70, FH-100 and FH-110 series
	Fiber holder	AD-60A: ≤ 250 µm – 5 ~ 20 mm, 900 µm – 10 ~ 20 mm AD-60B: 3 mm Max – 14 ~ 20 mm
Cleave Angle	Single fiber	Approx. 10 mm
	Fiber ribbon	Avg. 0.3 to 0.9 degrees
Blade Life	Single fiber	Avg. 0.3 to 1.2 degrees
	Fiber ribbon	Approx. 60,000 fiber cleaves
Physical description (lever closed)	Dimensions W	Approx. 113 mm
	Dimensions D	Approx. 92 mm
	Dimensions H	Approx. 54 mm
	Weight	Approx. 293 g including battery and AD-60A
Environmental condition	Temperature	Operate: -10°C to 50°C Storage: -40°C to 80°C
	Humidity	Operate: 0 to 95%RH non-condensing Storage: 0 to 95%RH non-condensing
Battery		2 ea. batteries LR03/AAA dry battery
Wireless interface		Bluetooth 5.2
Screw hole for tripod		1/4-20UNC
Other features	Blade rotation	Motorized rotation Manual rotation dial
	Replaceable items	Blade Clamp arm

Ordering Information

Description	Application	Fiber Handling System	Cleave Length	AFL No.
CT60	Single or Ribbon Fiber	AD-60A adapter plate for single fibers or fiber holders for ribbons	See Specifications table above	S018654
CT60 No Bluetooth	Single or Ribbon Fiber	AD-60A adapter plate for single fibers or fiber holders for ribbons	See Specifications table above	S018664

Accessories

Description	AFL No.
CB-10 Replacement Blade	S018683
FDB-08 Fiber Scrap Collector for CT-60 (Small size)	S018685
AD-60B Adapter Plate	S018682
SC-CT60-01 Side cover for CT-60	S018686
SPA-CT60-10 Cleave Length of 10 mm	S018687
SPA-CT60-09 Cleave Length of 9 mm	S018688
TS-04B tripod Screw For CT-60 Cleaver	S018691

Splice+ is a smartphone application that works in cooperation with Fujikura's splicers, cleavers and ribbon fiber strippers which have Bluetooth capability.

Get the **Splice+** app at the Apple App store or at Google Play.

[>> Return to Page 1](#)

Contact the professionals at Fiber Optic Center for a quote or to get more details.

focenter.com • 508-992-6464 | (800) 473-4237 • sales@focenter.com

23 Centre Street • New Bedford, MA 02740 USA

Product specifications and data are subject to change without notice. FOC last update 6/4/2026.