



**Manufacturer:**  
Amphenol Fiber Optic Products

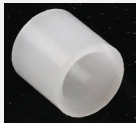
**Product Name:**  
Amphenol Delrin Assembly Sleeve

**Manufacturer Part Number:**  
906-101-3007

▶ [Click here for more details on the Amphenol Delrin Assembly Sleeve](#)

**P/N: 906-101-3007**

**Description** Alignment Sleeve, Assembly



Amphenol Fiber Optic Products was the pioneer in developing the first industry standard fiber optic interconnect system by introducing the SMA connector & adapter. The 905/906 Series connectors were the first fiber optic interconnect system to gain industry wide acceptance.



**Overview**

The 906-101-3007 Alignment sleeve Assembly consists of two sleeves:

- 906-101-3002 is the SMA Half Length Natural white sleeve, made of POM-C material
- 906-101-3003 is the SMA Full Length Red sleeve, made of Delrin-C Material
- The Half length alignment sleeve, mates the 906 connector to an active device receptacle or converts the 906 SMA connector to a 905 SMA connector.
- The full length alignment sleeve mates 906 SMA connectors to 906 SMA connectors

**Features & Benefits**

- Quality construction ensures long life, durability & dependability
- When (2) 906 SMA's are mated together the 906 ferrule design allows the use of the alignment sleeve which provide the user a lower insertion loss

**Applications**

- Medical / Surgical
- Laser Systems
- Industrial
- Spectrometers
- Data Communications

**Technical Specifications**

906-101-3002	POM-C
906-101-3003	Delrin
Weight	.003 Kg / .006 lb

**Physical Characteristics**

906-101-3002	906-101-3003
Length - .122" / 3.0 mm	Length - .244" / 6.1 mm
OD = .123" / 3.1mm	OD = .123" / 3.1 mm
	OD Taper = .112" / 2.8 mm
ID = .084" / 2.1 mm	ID = .084" / 2.1 mm
With Countrbore	With Counterbore

**Environmental Specifications**

Operating Temperature:	Storage Temperature:
-40°C to 85°C	-40°C to 70°C

**Contact the professionals at Fiber Optic Center for a quote or to get more details.**

[focenter.com](http://focenter.com) • 508-992-6464 | (800) 473-4237 • [sales@focenter.com](mailto:sales@focenter.com)

23 Centre Street • New Bedford, MA 02740 USA

Product specifications and data are subject to change without notice. FOC last update 3/13/2026.



**Manufacturer:**  
Amphenol Fiber Optic Products

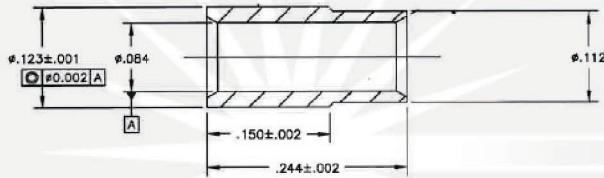
**Product Name:**  
Amphenol Delrin Assembly Sleeve

**Manufacturer Part Number:**  
906-101-3007

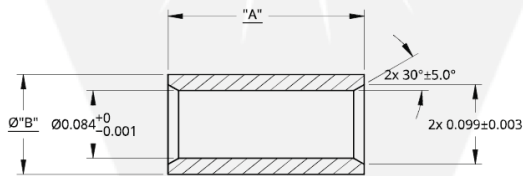
▶ [Click here for more details on the Amphenol Delrin Assembly Sleeve](#)

**P/N: 906-101-3007**

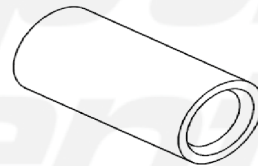
**Assembly Drawing; 906-101-3003**



**Assembly Drawing; 906-101-3002**



P/N	"A"	"B"
906-101-3002	.122±.002	.123±.001



**Ordering Information**

Order Code:	Customization Options:	MOQ (Minimum Order Quantity):
906-101-3007P	Bulk Packaging (100)	300 pieces

**Performance and Testing**

Testing Method:	100% tested for optical performance
-----------------	-------------------------------------

**Compliance and Certifications**

IEC 61754-22 Compliant:	RoHS / Reach
-------------------------	--------------

**Contact the professionals at Fiber Optic Center for a quote or to get more details.**

[focenter.com](http://focenter.com) • 508-992-6464 | (800) 473-4237 • [sales@focenter.com](mailto:sales@focenter.com)

23 Centre Street • New Bedford, MA 02740 USA

Product specifications and data are subject to change without notice. FOC last update 3/13/2026.