

**Product Name:**

NorthLab ProView IF0201000 Fiber Optic Center

**Manufacturer Part Number:**

IF-02-01000

## ProView™

Fiber End Face Interferometer & Microscope

NorthLab's ProView™ is an highly advanced interferometer for precise measurement and inspection of fiber end faces with cladding diameters between 125 - 720µm. The interferometer is specifically designed for production lines where a simple, fast and very accurate end face inspection is required. But the ProView is also well suited for R&D environments and for fiber cleaver maintenance purposes.

In many cases an interferometric fringe pattern can be very complicated to analyse and understand. For ease of use and optimal inspection speed the ProView includes highly advanced and fully automatic functions for 2D and 3D topographic analyses of the end face surface. The software automatically indicates the angle, flatness and slope direction of the end face.

To simplify the inspection process even further the ProView can be set to a "PASS/FAIL" mode. This function allows the operator to simply determine the end face quality via colour codes on the image.

In addition to cleave angle inspection the ProView can also be used to measure several other properties such as fiber diameters and distance between defined points etc.

The ProView has a unique fiber clamping mechanism which can accommodate standard fiber holders from Fitel or Fujikura but also allows the use of bare fibers. Custom made clamps or adapters can be offered on request. The ProView is delivered with a universal sized v-groove clamp assembly.

The ProView has a compact design which makes it ideal for a production bench and to be used side-by-side with fusion splicers, cleavers and other preparation tools. The ProView is connected and powered via an USB 3.0 cable and hosted by an external PC (not included).



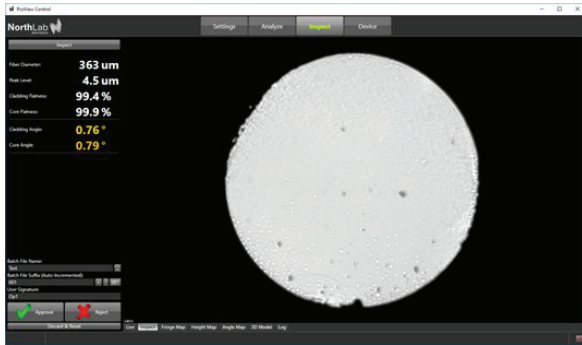
### Key Features

- For fiber cladding diameters from 125 to 720µm
- 2D and 3D topography
- Fringe & Inspection mode from PC Controller GUI
- Very fast inspection time with automatic angle estimation
- Optional use of PASS/FAIL cleave angle indication
- Inspection of end-face properties such as flatness, perpendicularity, hackles and contamination
- Grab and save 2D and 3D images and cleave data

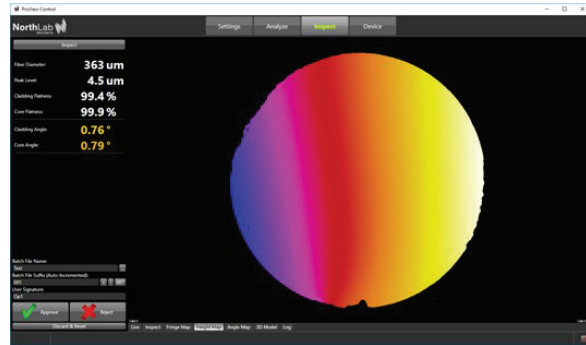
**Contact the professionals at Fiber Optic Center for a quote or to get more details.**

**focenter.com • 508-992-6464 | (800) 473-4237 • sales@focenter.com**

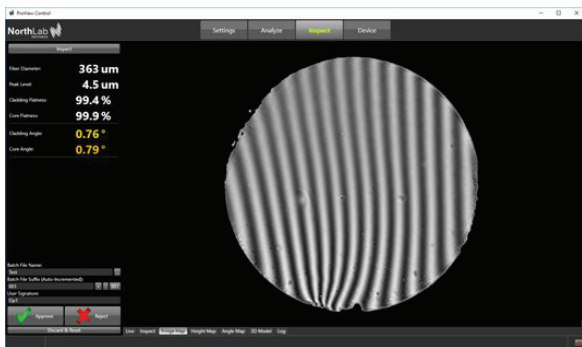
**23 Centre Street • New Bedford, MA 02740 USA**



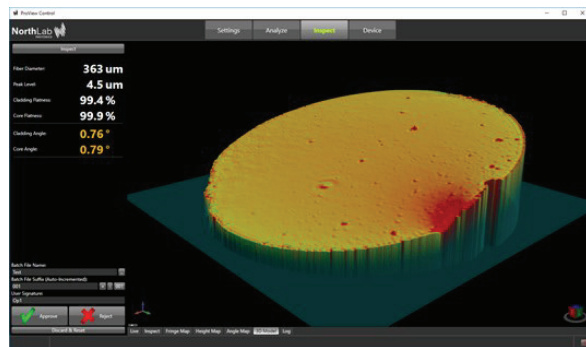
**MICROSCOPE VIEW**



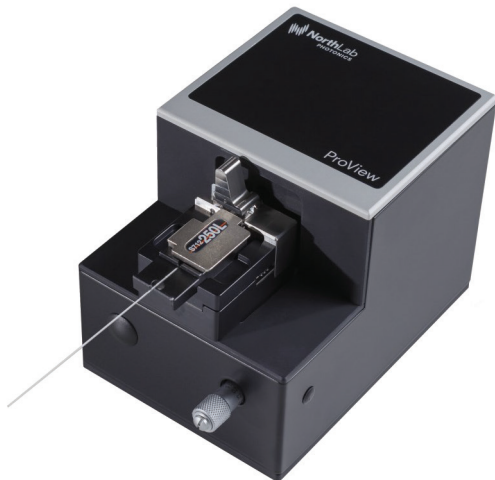
**HEIGHT MAP VIEW**



**INTERFEROMETER VIEW**



**3D MODEL VIEW**



**FITEL/FUJIKURA FIBER HOLDER PLATFORM**

**Contact the professionals at Fiber Optic Center for a quote or to get more details.**

**focenter.com • 508-992-6464 | (800) 473-4237 • sales@focenter.com**

**23 Centre Street • New Bedford, MA 02740 USA**



### Technical Specifications

**Dimensions:** 85(W) x 135(D) x 93(H) mm  
**Weight:** 1.2 kg  
**Power Supply:** Through USB port  
**PC connection:** Super Speed USB (USB 3.0) Type-A with 3 m cable  
**Environment:** Operating temperature: 10 °C ~ 40 °C  
 Storage temperature: -20 °C ~ 50 °C  
 Humidity: 5 % ~ 95 % RH (non-condensing)  
**Fiber:** 125 – 720 μm  
**Field of View:** ~800 μm  
**Resolution:** 2560 x 1920 (4,92MP)  
**Sensor:** CMOS (monochrome)  
**Image file format:** JPEG, PNG, TIFF, GIF

### System accuracy

**Absolute accuracy<sup>\*</sup>:** < 0.01° standard deviation  
**Relative accuracy<sup>\*</sup>:** 5% up to 2°

### System Requirements

**Computer:** PC with Intel i5 or better  
**USB:** One free USB 3.0 port (Super Speed)  
**Memory:** min. 4 GB RAM (16 GB RAM recommended)  
**Disc space:** min. 500 MB  
**Operating system:** Windows 8/8.1/10 (64-bit)

<sup>\*</sup> Using software calibration compensation

Product	Part #	Qty
<b>ProView, Fitel F/H platform</b>	<b>IF-02-01000</b>	
<b>ProView, Fujikura F/H platform</b>	<b>IF-03-01000</b>	
<b>Standard Delivery Kit Including:</b>		
ProView	IF-01-01000	1
Fitel Fiber Holder Platform (depending on F/H choice)	IF-01-01001	1
Fujikura Fiber Holder Platform (depending on F/H choice)	IF-01-01002	1
Shims (Set of 4 pcs)	IF-01-01003	1
PC Software & Users Manual		1

INFORMATION IS SUBJECT TO CHANGE WITHOUT NOTICE

Contact the professionals at Fiber Optic Center for a quote or to get more details.

focenter.com • 508-992-6464 | (800) 473-4237 • sales@focenter.com

23 Centre Street • New Bedford, MA 02740 USA