



Manufacturer:
Dymax®

Product Name:
Dymax BlueWave® FX-1250 High Intensity LED Curing Flood System - 365nm

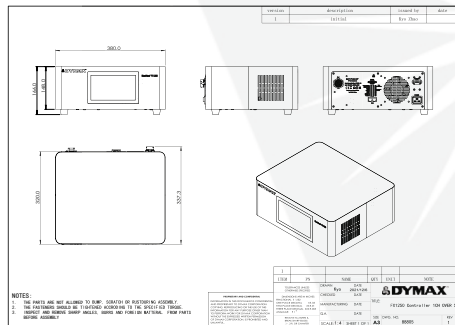
Manufacturer Part Number:
88848



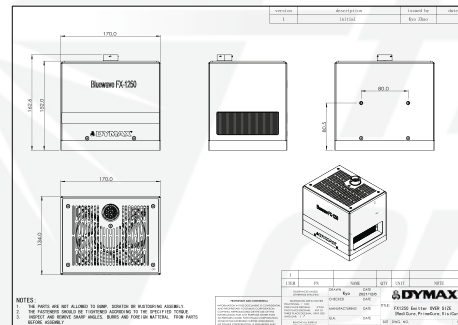
[Learn More](#)

▶ [Click here for more details on the Dymax BlueWave® FX-1250 High Intensity LED Curing Flood System - 365nm](#)

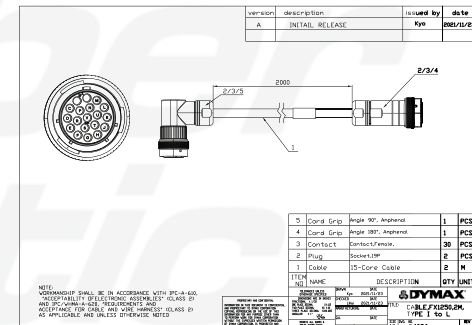
Click the thumbnail below to navigate to the drawing.



[FX1250 Controller 1CH OVER SIZE](#)



[FX1250 Emitter OVER SIZE
\(RediCure, PrimeCure, VisiCure\)](#)

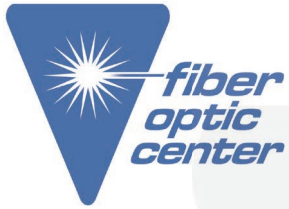


[Cable, FX1250, 2M
Type I to L](#)

Contact the professionals at Fiber Optic Center for a quote or to get more details.

23 Centre Street • New Bedford, MA 02740 USA • focenter.com • 508-992-6464 • (800) 473-4237 • sales@focenter.com

DRAWING



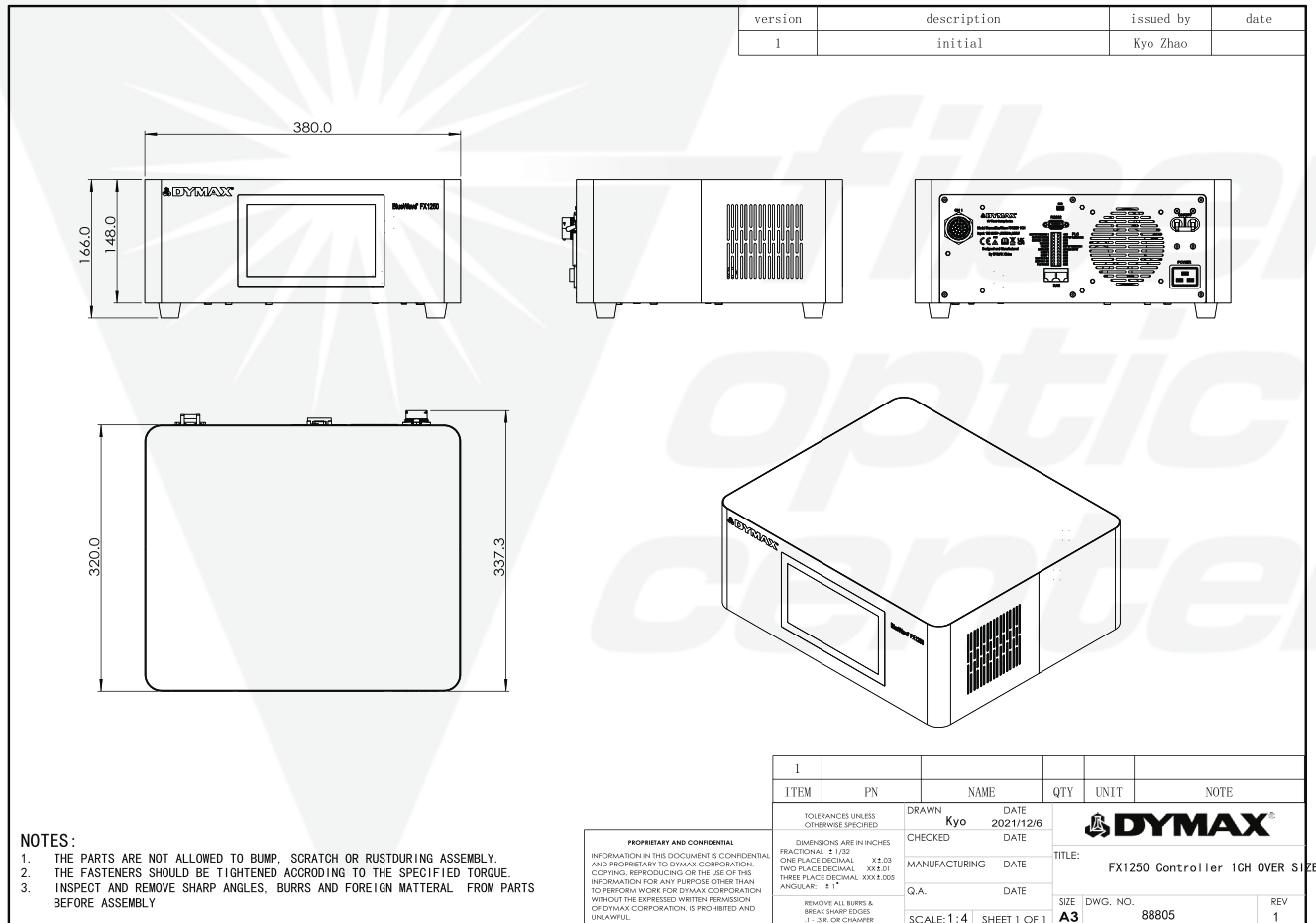
Manufacturer:
Dymax®

Product Name:
Dymax BlueWave® FX-1250 High Intensity LED Curing Flood System - 365nm

Manufacturer Part Number:
88848



► Click here for more details on the Dymax BlueWave® FX-1250 High Intensity LED Curing Flood System - 365nm

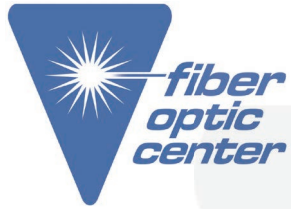


>> Return to Page 1

Contact the professionals at Fiber Optic Center for a quote or to get more details.

23 Centre Street • New Bedford, MA 02740 USA • focenter.com • 508-992-6464 • (800) 473-4237 • sales@focenter.com

DRAWING



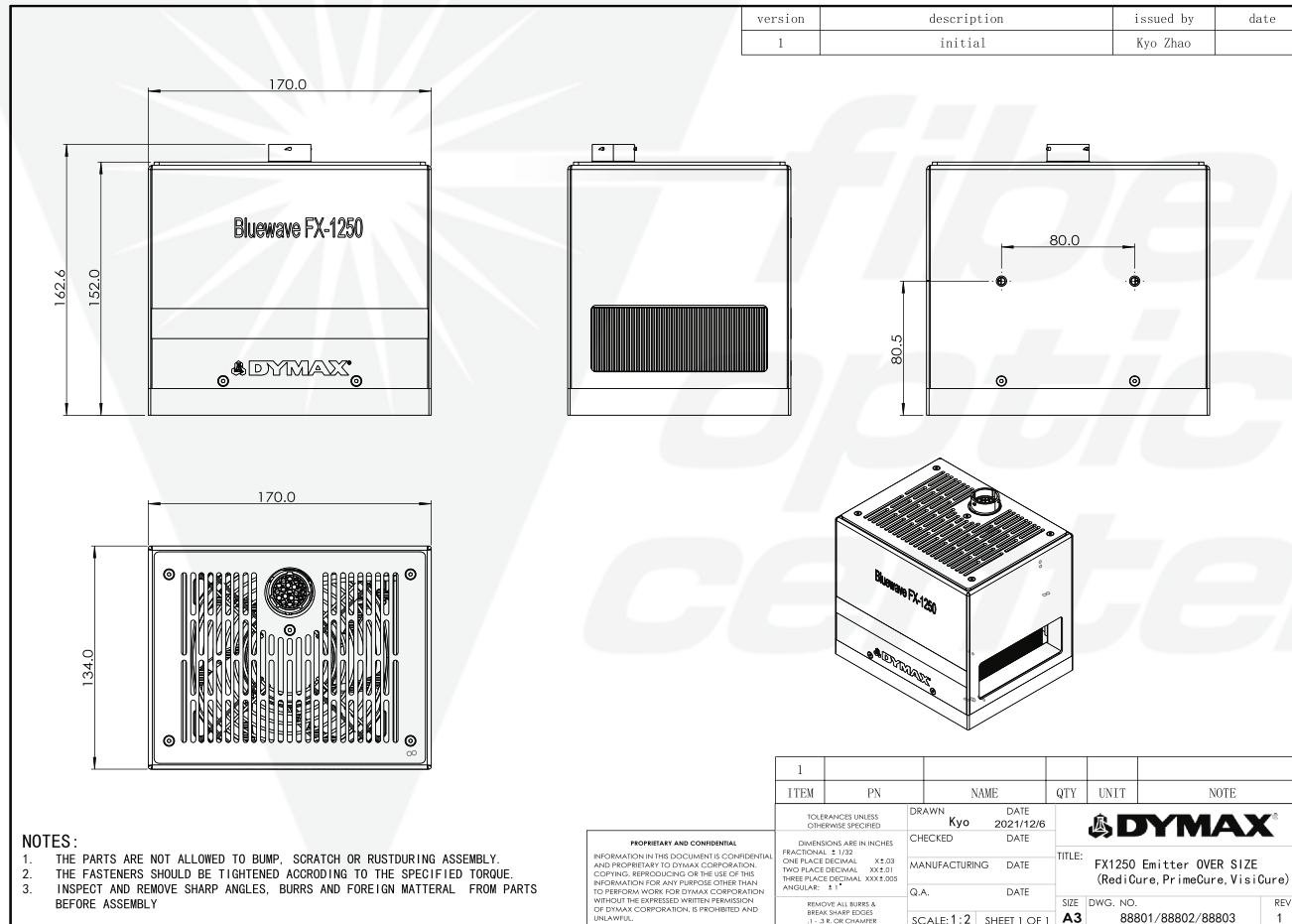
Manufacturer:
Dymax®

Product Name:
Dymax BlueWave® FX-1250 High Intensity LED Curing Flood System - 365nm

Manufacturer Part Number:
88848



► Click here for more details on the Dymax BlueWave® FX-1250 High Intensity LED Curing Flood System - 365nm



>> Return to Page 1

Contact the professionals at Fiber Optic Center for a quote or to get more details.

23 Centre Street • New Bedford, MA 02740 USA • focenter.com • 508-992-6464 • (800) 473-4237 • sales@focenter.com

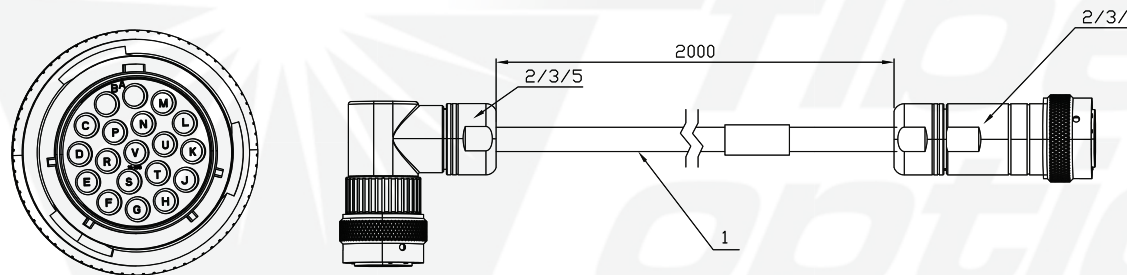


***fiber
optic
center***




Manufacturer Part Number:
88848



▶ [Click here for more details on the Dymax BlueWave® FX-1250 High Intensity LED Curing Flood System - 365nm](#)



version	description	issued by	date
A	INITAIL RELEASE	Kyo	2021/11/23

5	Cord Grip	Angle 90°, Amphenol	1	PCS																														
4	Cord Grip	Angle 180°, Amphenol	1	PCS																														
3	Contact	Contact,Female,	30	PCS																														
2	Plug	Socket,19P	2	PCS																														
1	Cable	15-Core Cable	2	M																														
ITEM NO	NAME	DESCRIPTION	QTY	UNIT																														
<table><tr><td rowspan="5"><p>TOLERANCES UNLESS OTHERWISE SPECIFIED</p><p>FRACTIONS: ± 1/32</p><p>DECIMALS: ± .005</p><p>ANGLES: ± 1°</p><p>REMOVE ALL BURRS & BREAK SHARP EDGES</p><p>1 - 3 IS OR COMPARE</p></td><td>DRAWN</td><td>Kyo</td><td>DATE</td><td>2021/11/23</td><td rowspan="5"><div> DYMAX®</div><div>TITLE: CABLE,FX1250,2M, TYPE I to L</div></td></tr><tr><td>CHECKED</td><td>Lihai</td><td>DATE</td><td>2021/11/23</td></tr><tr><td>MANUFACTURING</td><td></td><td>DATE</td><td></td></tr><tr><td>Q.A.</td><td></td><td>DATE</td><td></td></tr><tr><td>SCALE: 1/2"</td><td>SHEET 1 OF 1</td><td>SIZE</td><td>11x8.5 IN</td><td>REV</td><td>A</td></tr><tr><td colspan="2"></td><td>A3</td><td>84026</td><td colspan="2"></td></tr></table>					<p>TOLERANCES UNLESS OTHERWISE SPECIFIED</p> <p>FRACTIONS: ± 1/32</p> <p>DECIMALS: ± .005</p> <p>ANGLES: ± 1°</p> <p>REMOVE ALL BURRS & BREAK SHARP EDGES</p> <p>1 - 3 IS OR COMPARE</p>	DRAWN	Kyo	DATE	2021/11/23	<div> DYMAX®</div> <div>TITLE: CABLE,FX1250,2M, TYPE I to L</div>	CHECKED	Lihai	DATE	2021/11/23	MANUFACTURING		DATE		Q.A.		DATE		SCALE: 1/2"	SHEET 1 OF 1	SIZE	11x8.5 IN	REV	A			A3	84026		
<p>TOLERANCES UNLESS OTHERWISE SPECIFIED</p> <p>FRACTIONS: ± 1/32</p> <p>DECIMALS: ± .005</p> <p>ANGLES: ± 1°</p> <p>REMOVE ALL BURRS & BREAK SHARP EDGES</p> <p>1 - 3 IS OR COMPARE</p>	DRAWN	Kyo	DATE	2021/11/23		<div> DYMAX®</div> <div>TITLE: CABLE,FX1250,2M, TYPE I to L</div>																												
	CHECKED	Lihai	DATE	2021/11/23																														
	MANUFACTURING		DATE																															
	Q.A.		DATE																															
	SCALE: 1/2"	SHEET 1 OF 1	SIZE	11x8.5 IN	REV		A																											
		A3	84026																															

NOTE:
WORKMANSHIP SHALL BE IN ACCORDANCE WITH IPC-A-610,
'ACCEPTABILITY OF ELECTRONIC ASSEMBLIES' (CLASS 2)
AND IPC/WHMA-A-620, 'REQUIREMENTS AND
ACCEPTANCE FOR CABLE AND WIRE HARNESS' (CLASS 2)
AS APPLICABLE AND UNLESS OTHERWISE NOTED

PROPRIETARY AND CONFIDENTIAL

INFORMATION IN THIS DOCUMENT IS CONFIDENTIAL AND PROPRIETARY TO DYMAX CORPORATION. COPYING, REPRODUCING OR THE USE OF THIS INFORMATION FOR ANY PURPOSE OTHER THAN TO PERFORM WORK FOR DYMAX CORPORATION WITHOUT THE EXPRESSED WRITTEN PERMISSION OF DYMAX CORPORATION, IS PROHIBITED AND UNLAWFUL.

DIMENSIONS ARE IN INCH

FRACTIONAL $\pm 1/32$

ONE PLACE DECIMAL $\pm .01$

TWO PLACE DECIMAL $\pm .001$


THREE PLACE DECIMAL $\pm .0001$

ANGULAR $\pm 1'$

$\sqrt{2}/\text{MIN}$

REMOVE ALL BURRS &
BREAK SHARP EDGES
1 - 2 R. OR CUMULATED

DES .03 .01 .005	DRAWN	DATE
	Kyo	2021/11/11
	CHECKED	DATE
	Lihui	2021/11/11
	MANUFACTURING	DATE
	Q.A.	DATE
	SCALE: 1:2	SHEET 1

23	 DYMAX	TITLE: CABLE,FX1250,2M TYPE I to L
23		
23	SIZE: A3	DWG. NO.: 84026

REV
Δ

>> Return to Page 1

23 Centre Street • New Bedford, MA 02740 USA • focenter.com • 508-992-6464 • (800) 473-4237 • sales@focenter.com

Data is subject to change without notice. FOC last update 2/5/2026.