

**Manufacturer:**

Cable Prep®

Product Name:

Cable Prep® FOCUS™ Fiber Optic Connector Insertion and Removal Extraction Tool

Manufacturer Part Number:

FOC-100

[Learn More](#)

▶ [Click here for more details on the Cable Prep® FOCUS™ Fiber Optic Connector Insertion and Removal Extraction Tool](#)

FOCUS Fiber Optic Connector Tool



DESCRIPTION

Specially designed for servicing fiber optic cable connectors in high-density patch panels in Central Office, FTTN, and OSP applications, the FOCUS tool makes it easy to insert and remove a small-form-factor (SFF) connector without disturbing adjacent connections. Its patented design makes it truly unique in the industry. The FOCUS tool works with the follow fiber optic connector types: SC, SC2, MU, LC, and MTRJ connectors and different cables, including 2mm, 3mm, 1.6mm, jacketed, and 900um buffered cables. It is designed for accessing high-density patch panels – including those having 144 or more ports – and SFF connectors.

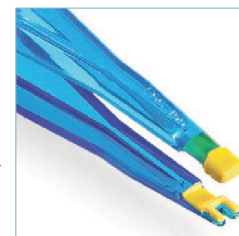
APPLICATIONS

The FOCUS tool works with SC, SC2, MU, LC, and MTRJ connectors and different cables, including 2mm, 3mm, 1.6mm, jacketed, and 900um buffered cables. It is designed for accessing high-density patch panels - including those having 144 or more ports - and SFF connectors.

SPECIAL FEATURES

Long, Narrow Jaws:

Long, narrow patented jaws facilitate insertion and removal of connectors without disturbing adjacent cables, even when working on densely populated panels. This ensures uninterrupted service on neighboring channels and eliminates unnecessary stress on delicate fibers.

*Continued next page*

Page 1 of 3

Contact the professionals at Fiber Optic Center for a quote or to get more details.

focenter.com • 508-992-6464 | (800) 473-4237 • sales@focenter.com

23 Centre Street • New Bedford, MA 02740 USA

Product specifications and data are subject to change without notice. FOC last update 12/24/2025.

**Manufacturer:**

Cable Prep®

Product Name:

Cable Prep® FOCUS™ Fiber Optic Connector Insertion and Removal Extraction Tool

Manufacturer Part Number:

FOC-100

[Learn More](#)

▶ [Click here for more details on the Cable Prep® FOCUS™ Fiber Optic Connector Insertion and Removal Extraction Tool](#)

FOCUS Fiber Optic Connector Tool

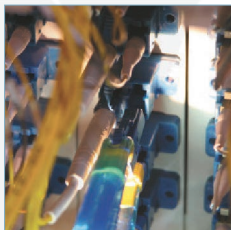
SPECIAL FEATURES (continued)

An Ergonomic Design:

The tool body is comfortable to hold and easy to navigate with either hand. It is designed for one-handed operation and accommodates both large and small hands. Because the spring-loaded jaws are long and tapered, they easily reach the back of patch-panel enclosures. The tool design prevents pinching the operator's hand when opening or closing the jaws.

**An Integrated Flashlight:**

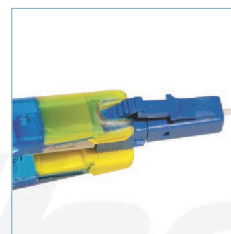
A patented removable flashlight improves visibility while navigating through a congested enclosure. The light illuminates individual ports and connectors on the panel as well as the tool tips, which allows the tool to be used in low-light situations. The two standard AAA batteries can be easily changed in the field.

**Universal Tips:**

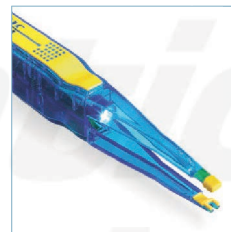
Made of specially formulated material, the patented tips of the tool provide a firm grasp on small-form-factor connectors. The jaws support the cable to keep it from bending and protect the delicate fibers within.

**Contoured Notch for LC Connectors:**

During insertion of LC connectors, the patented notch on one tip prevents the latch from being depressed, ensuring positive latching of the connector. During removal, the straight tip depresses the latch and frees the connector from its port.

**Non-locking Design:**

The patented tool jaws are spring-loaded and will not lock onto the connector, thus avoiding damage to the connector and cable if the tool is dropped during use.

**Ease of Visibility and Storage:**

Made of attractive bright yellow and translucent blue material, the tool is easily located if dropped or misplaced in a poorly lit environment. It fits conveniently in a holster that mounts to a standard tool belt; the holster is available from Cable Prep.

**Non-conducting Material:**

The tool is made of non-conducting, dielectric plastic materials that eliminate the potential for shorts during use.

Page 2 of 3

Contact the professionals at Fiber Optic Center for a quote or to get more details.

focenter.com • 508-992-6464 | (800) 473-4237 • sales@focenter.com

23 Centre Street • New Bedford, MA 02740 USA

Product specifications and data are subject to change without notice. FOC last update 12/24/2025.

**Manufacturer:**

Cable Prep®

Product Name:

Cable Prep® FOCUS™ Fiber Optic Connector Insertion and Removal Extraction Tool

Manufacturer Part Number:

FOC-100

[Learn More](#)

▶ [Click here for more details on the Cable Prep® FOCUS™ Fiber Optic Connector Insertion and Removal Extraction Tool](#)

FOCUS Fiber Optic Connector Tool

SPECIAL FEATURES *(continued)*

Equipment Damage Mitigation:

Using the FOCUS tool ensures proper snap fits and reduces the risk of damage to connector bodies, ferrule tips, sleeves, cables, and panel ports that might otherwise result from forced insertions and removals.

Durability:

With the exception of an easily replaced flashlight, the tool can be dropped from a height of ten feet without damage. It can be used in indoor and outdoor environments and has an operating temperature range of -40°C to +95°C.

ORDERING INFORMATION

FOCUS TOOL	FOC-100
Replacement Light Assembly	FOC-RLA1
Belt Holster for FOCUS Tool	T-HLSTR

SPECIFICATIONS

Tool Weight (includes installed flashlight)	5.9 oz / 167 grams
Replacement Light Assembly Weight	2.1 oz / 60 grams
Holster Weight	1.2 oz / 34 grams
Tool Length	8.436 in / 214.2 mm
Tool Width	1.170 in / 29.7 mm
Tip Width	0.309 in / 7.8 mm
Packaging	One tool per box; 25 boxes per carton

Page 3 of 3

Contact the professionals at Fiber Optic Center for a quote or to get more details.

focenter.com • 508-992-6464 | (800) 473-4237 • sales@focenter.com

23 Centre Street • New Bedford, MA 02740 USA

Product specifications and data are subject to change without notice. FOC last update 12/24/2025.