

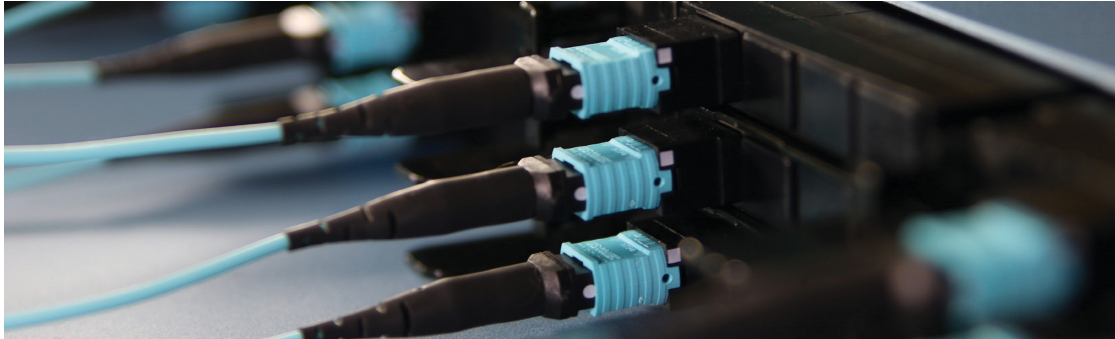


**Manufacturer:**  
AFL

**Product Name:**  
AFL FOCIS Lightning2 Probe Scope w/ WiFi (no tips)

**Manufacturer Part Number:**  
FOCIS-LT2-N

>> Find Out More Details on the AFL FOCIS Lightning2 Probe Scope w/ WiFi (no tips) <<



## FOCIS Lightning<sup>®</sup> 2

Ultrafast MPO/MTP<sup>®</sup> Inspection Made Simple



**FOCIS Lightning2 focuses, captures, analyzes all fibers in the MPO/MTP end-face with a click of a button!**

### Specifications

- Field of View Multi Fibers Live: 3200 x 4800  $\mu$ m
- Field of View Single Fiber Live: 1314 x 2144  $\mu$ m
- Display: 3.5, color TFT LCD touch screen, 320 x 480
- Pass/Fail Analysis: IEC 61300-3-35, , user
- File Formats: 640 x 480 pixels JPG, GIF
- Storage Capacity: 10,000 files
- Battery: 8 hours, Li-Pol, user-replaceable

FOCIS Lightning2 is a compact, self-contained inspection probe that captures and displays the entire MPO end-face image in less than two seconds. One button provides auto-focusing, centering, and pass/fail analysis at the connector and individual fiber level. It can complete a 24-fiber MPO inspection task in less than 15 seconds. Results can be easily shared via USB and Bluetooth<sup>®</sup>.

FOCIS Lightning2 fits in the palm of your hand and easily inspects hard-to-reach MPO datacenter connection panels. Its large 3.4" color LCD touchscreen easily allows viewing of MPO and single fiber ferrules. The high-resolution display and improved zoom capability will enable quick, advanced fiber analysis and inspection.

Test results can be shared using the FlexReporter software suite. Designed for speed and simplicity, FlexReporter enables you to generate clear and easy-to-read reports quickly and easily.

Put the speed and power of fiber inspection in your hands with the FOCIS Lightning2. Contact your AFL representative to schedule a demo or get more information.

**Contact the professionals at Fiber Optic Center for a quote or to get more details.**

[focenter.com](http://focenter.com) • 508-992-6464 | (800) 473-4237 • [sales@focenter.com](mailto:sales@focenter.com)

23 Centre Street • New Bedford, MA 02740 USA

*Product specifications and data are subject to change without notice.*