

Manufacturer:
Domaille Engineering

Product Name:
Domaille AbraSave® 'C' 12-Port 8° (degree) TMT/APC Connector Polishing Fixture - Rapid Clamp

Manufacturer Part Number:
PFC-TMT-EZR8-12



[Learn More](#)

▶ [Click here for more details on the Domaille AbraSave® 'C' 12-Port 8° \(degree\) TMT/APC Connector Polishing Fixture - Rapid Clamp](#)

ABRASAVE® TMT-EZR FIXTURE LINE

P/N PFC-TMT-EZR8-24 OR PFC-TMT-EZR8-12



Designed for Maximum Efficiency

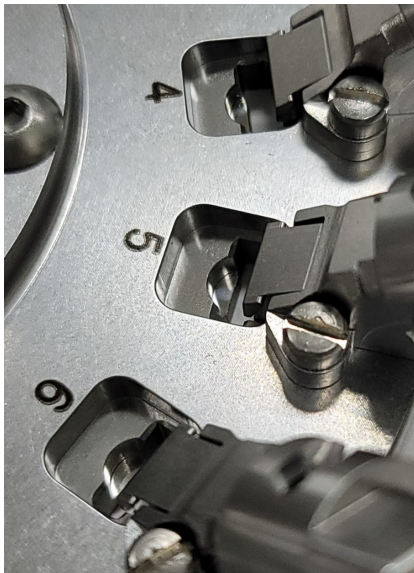
The TMT-EZR Rapid Clamp from Domaille Engineering is specially designed to reduce loading time, while minimizing protrusion height variation, maximizing yields and extending polishing film life.

The TMT-EZR Rapid Clamp system is designed around our patented MT-EZ clamp that has 15+ years of proven excellence. It was re-designed for optimized clamping of the TMT ferrule and has been incorporated into the 12 & 24 Port AbraSave® TMT Polishing Fixtures.



Benefits at a Glance:

- Rapid Clamp Actuation for Maximum Efficiency
- Visual Indication of Clamp Engagement
- No tools to locate, maintain or replace—instant cost savings
- Reduced operator fatigue
- Designed to minimize protrusion height variation in TMT/MMC connector polishing
- Available in straight or angled configurations
- Reduced clamping force with constant spring pressure to minimize clamping distortion
- Cable management devices available to further control process
- Patented MT-EZ Clamp System, US Patent 7,738,760
- Patented MT-EZR Latch System, US Patent 11,326,630 & 11,493,067



Contact the professionals at Fiber Optic Center for a quote or to get more details.

focenter.com • 508-992-6464 | (800) 473-4237 • sales@focenter.com

23 Centre Street • New Bedford, MA 02740 USA

Product specifications and data are subject to change without notice.