



**Manufacturer:**  
Dimension

**Manufacturer Part Number:**  
EC080KC-V2 • EC200KC-V2  
EC400KC-V2 • EC400KD-V2

## EasyCheck V2 Digital Fiber Endface Inspector



- Digital solution
- High resolution
- Network transmission
- Support scan gun

EasyCheck V2 is a Digital Fiber Endface Inspector developed by Dimension , which adopts the digital solution to upgrade the software and hardware of EasyCheck series products. EasyCheck V2 has improved image resolution and reduced noise; stable performance and reduced failure rate; support Network transmission, interconnection with Dimension ' s EasyGet Digital handheld fiber probe , scan gun or foot switch, etc.

### Main Features

- Digital solution with high image resolution and low noise
- Stable performance, good consistency, low failure rate
- Stored images clearer
- Support SD card, U disk and network transmission
- Inspect female connectors with Dimension ' s EasyGet Digital probe
- More accessibility features
- Multiple magnifications, 80X, 200X, 400X

### Applications

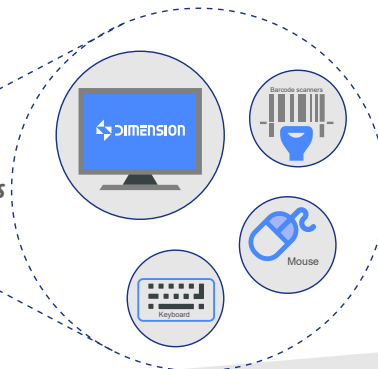
- All kinds of fiber connectors, transceivers, TOSA/ROSA , etc.

### Excellent image quality

EasyCheck V2 adopts the digital imaging solution to improve image resolution and reduce noise, resulting in clearer images and clearer contrast of fiber endface defects.



Digital Solutions



EasyCheck V2

Contact the professionals at Fiber Optic Center for a quote or to get more details.

focenter.com • 508-992-6464 | (800) 473-4237 • sales@focenter.com  
23 Centre Street • New Bedford, MA 02740 USA



**Manufacturer:**  
Dimension

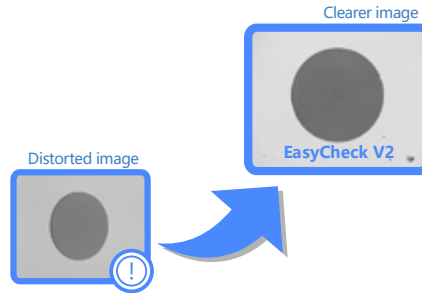
**Manufacturer Part Number:**  
EC080KC-V2 • EC200KC-V2  
EC400KC-V2 • EC400KD-V2

#### ◀ Good consistency and low failure rate

EasyCheck V2 is upgraded through hardware solutions to ensure consistency between devices, stable performance, and greatly reduces failure rate.

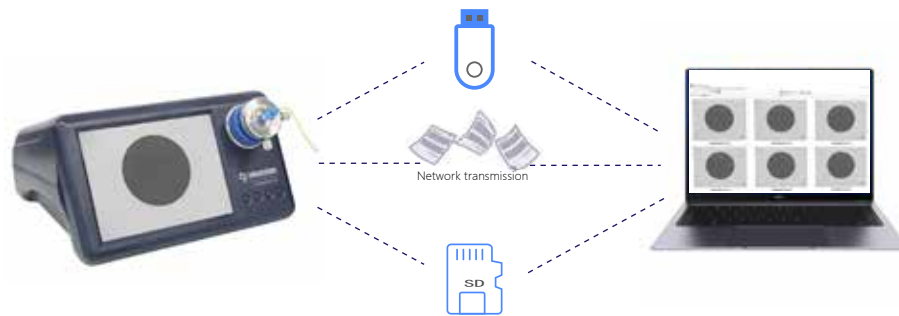
#### ◀ Stored images are clearer

EasyCheck V2 stores the images of the fiber endfaces more clearly.



#### ◀ Support SD card, U disk and network transmission

EasyCheck V2 has images acquisition function and supports multiple storage methods, including SD card, U disk and network transmission storage. the name of the picture can be customized and automatically entered, which can effectively analyze the quality of the stored pictures.



#### ◀ Image input and output

EasyCheck V2 provides image input and output functions, which can be connected to the HDMI interface display screen to meet the special needs of users; it can be interconnected with EasyGet Digital handheld fiber probe to easily inspect various female connectors.



EasyCheck V2

**Contact the professionals at Fiber Optic Center for a quote or to get more details.**

focenter.com • 508-992-6464 | (800) 473-4237 • sales@focenter.com

23 Centre Street • New Bedford, MA 02740 USA



**Manufacturer:**  
Dimension

**Manufacturer Part Number:**  
EC080KC-V2 • EC200KC-V2  
EC400KC-V2 • EC400KD-V2

### More accessibility features

To meet the operability of production line employees, EasyCheck V2 can be connected to an external code scan gun to automatically enter the product serial numbers, an external foot switch to trigger the image storage, and an external keyboard or a mouse for custom settings, which is more convenient and quick to use.



### Interface list

EasyCheck V2 is equipped with a variety of adapter interfaces to inspect various fiber connectors, transceivers, TOSA/ROSA, etc. The following is a list of some common interfaces.

Model number	Material number	Adaptor name	Picture	Detectable device	Detection diagram
EC-K-N005	201010014	1.25mm/PC dual core adaptor interface		1.25mm/PC dual core adaptor LC/PC male Duplex MU/PC male Duplex	
EC-K-N006	130101000065	SMA/PC ferrule adaptor interface		SMA/PC male	
EC-K-N010	20002041 201010032	FC/PC adaptor		FC/PC adaptor	
EC-K-N014	20002022 201010017	E2000/PC adaptor		E2000/PC male	

EasyCheck V2

**Contact the professionals at Fiber Optic Center for a quote or to get more details.**

focenter.com • 508-992-6464 | (800) 473-4237 • sales@focenter.com

23 Centre Street • New Bedford, MA 02740 USA



**Manufacturer:**  
Dimension

**Manufacturer Part Number:**  
EC080KC-V2 • EC200KC-V2  
EC400KC-V2 • EC400KD-V2

Model number	Material number	Adaptor name	Picture	Detectable device	Detection diagram				
EC-K-N016	120020026 130101000057	MT/PC ferrule adaptor		MT/PC Ferrule					
EC-K-N017	20002005 201010005	MPO/PC adaptor		MPO/MTP adaptor <small>Note: For MPO/MTP adaptor, EC400KC is only applicable to Female's inspection, EC400KD is compatible with Male/Female's inspection</small>					
EC-K-N026	120020072 130101000056	SC module adaptor		Conventional light emitting component, light receiving component, optical module, adaptor <table border="1"> <tr> <td>SC Tosa</td> <td>SC Rosa</td> </tr> <tr> <td>SC module</td> <td>SC adapter</td> </tr> </table>	SC Tosa	SC Rosa	SC module	SC adapter	
SC Tosa	SC Rosa								
SC module	SC adapter								
EC-K-N028	120020073 130101000054	LC module adaptor		Conventional light emitting component, light receiving component, optical module, adaptor <table border="1"> <tr> <td>LC Tosa</td> <td>LC Rosa</td> </tr> <tr> <td>LC module</td> <td>LC adapter</td> </tr> </table>	LC Tosa	LC Rosa	LC module	LC adapter	
LC Tosa	LC Rosa								
LC module	LC adapter								

### Specifications

Item	Parameter
Magnification	80X,200X,400X
Image format	Digital imaging
Sensor	1/2 inch, CMOS
Image size	80mm 40mm 16mm
Adjustable range	X: 4mm, Y: 4mm
X/Y axis adjustment	Optional
Focus method	Manual
EasyGet Digital input port	Yes
Display screen	8" TFT 1024x768 PIX
External interface	2xUSB, 1xSD, 1xLan, 1xHDMI
Power	6W
Working temperature	-10°C~ 40°C
Storage temperature	-20°C~ 55°C
power supply	DC 12V
Weight	1.6kg
Volume	270mmX245mmX155mm

**Contact the professionals at Fiber Optic Center for a quote or to get more details.**

focenter.com • 508-992-6464 | (800) 473-4237 • sales@focenter.com

23 Centre Street • New Bedford, MA 02740 USA