



**Manufacturer:**  
Lightel

**Product Name:**  
Lightel CI-1100 400x Inspection Probe w/ Portable Display

**Manufacturer Part Number:**  
CI-1100-A2

▶ [Click here for more details on the Lightel CI-1100 400x Inspection Probe w/ Portable Display](#)

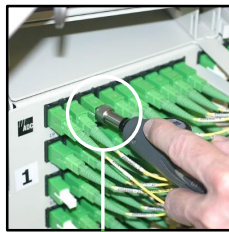


## Video microscope for fiberoptic connector inspection

The eye-safe CI-1100 Connector Inspector is a portable video microscope used to inspect fiber optic connector endfaces for contamination. The handheld probe design makes it easy for users to inspect both patchcords and hard-to-reach in-adapter connectors.

The CI-1100-A2 package includes a folding LCD monitor, 4 inspection tips, a charger/adapter, and a carrying case. An optional USB adapter is also available for the capture of images on a PC.

Lightel offers a large variety of adapter tips, allowing you to view almost any connector in any location.



### Features

- Optional USB add-on for image capture or Pass/Fail analysis on a PC
- 3.5" fold-up monitor provides easy viewing in a compact package
- Quick and easy focus
- Ideal for inspecting both patchcords and adapter bulkhead connectors

Contact the professionals at Fiber Optic Center for a quote or to get more details.

[focenter.com](http://focenter.com) • 508-992-6464 | (800) 473-4237 • [sales@focenter.com](mailto:sales@focenter.com)

23 Centre Street • New Bedford, MA 02740 USA

*Product specifications and data are subject to change without notice.*



**Manufacturer:**  
Lightel

**Product Name:**  
Lightel CI-1100 400x Inspection Probe w/ Portable Display

**Manufacturer Part Number:**  
CI-1100-A2

▶ [Click here for more details on the Lightel CI-1100 400x Inspection Probe w/ Portable Display](#)

➔ **Specifications**

Probe	
Magnification	400X (w/9" monitor)
Field of View	~425µm x 320µm (standard) ~640µm x 480µm (lower magnification option)
Resolution	0.5µm detectable
Focus	Manual adjustment, 2mm max travel
Light Source	Blue LED
Dimensions	35mm diameter x 175mm length (without tip)
Weight	200g
Monitor	
Display	3.5" TFT-LCD, 960 x 240px Adjustable brightness and contrast
Dimensions	105mm x 90mm x 45mm (folded)
Weight	255g (without battery)
Power Supply	9.6V battery pack or AC power supply
Battery Life	4 hours
Charger/AC Adapter	US, EU, UK, and Australian versions available
Operating Temperature	0°C to 50°C
Storage Temperature	-20°C to 70°C

Key Options	
USB2.0 Adapter	Use the CI-1100 probe to view, capture, and store images on a Windows® PC
ConnectorView Plus Software	Pass/Fail analytical and reporting software for a Windows® PC
"Hot" Fiber Filter	Inspect live fiber connectors. Useable to at least 20dBm. (higher power would not damage the unit, but may not provide useful images)
Tip Adapter	Use any CI-1000 tip with the CI-1100

CI-1100-A2 Package
1 Probe (CI-1100)
1 LCD monitor
1 Rechargeable battery pack (inside LCD monitor)
1 AC power adapter/battery charger
1 Universal 2.5mm tip for PC type male connectors
1 Universal 1.25mm tip for PC type male connectors
1 Tip for SC/PC and FC/PC type female connectors
1 Tip for LC/PC type female connectors
1 Tip box
1 Carrying case



**Contact the professionals at Fiber Optic Center for a quote or to get more details.**

[focenter.com](http://focenter.com) • 508-992-6464 | (800) 473-4237 • [sales@focenter.com](mailto:sales@focenter.com)  
23 Centre Street • New Bedford, MA 02740 USA

*Product specifications and data are subject to change without notice.*